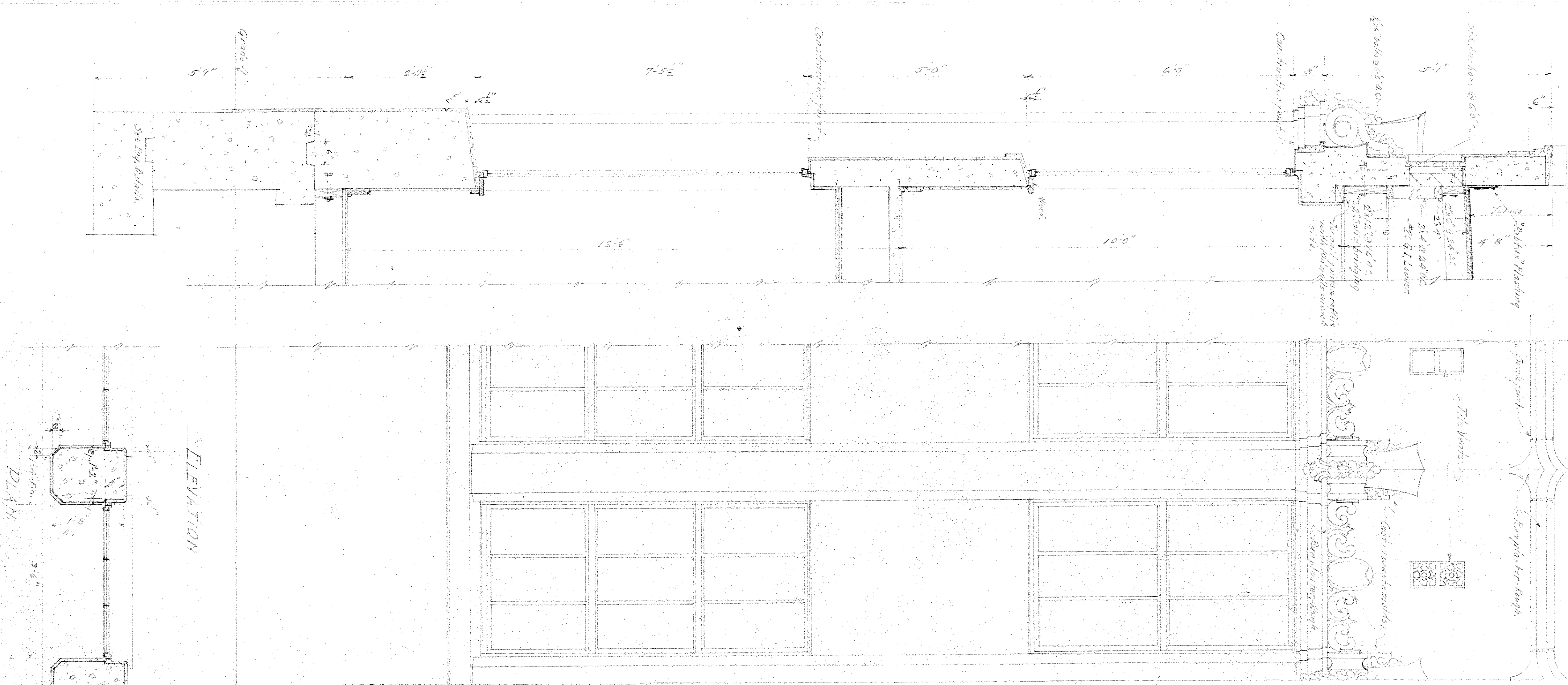
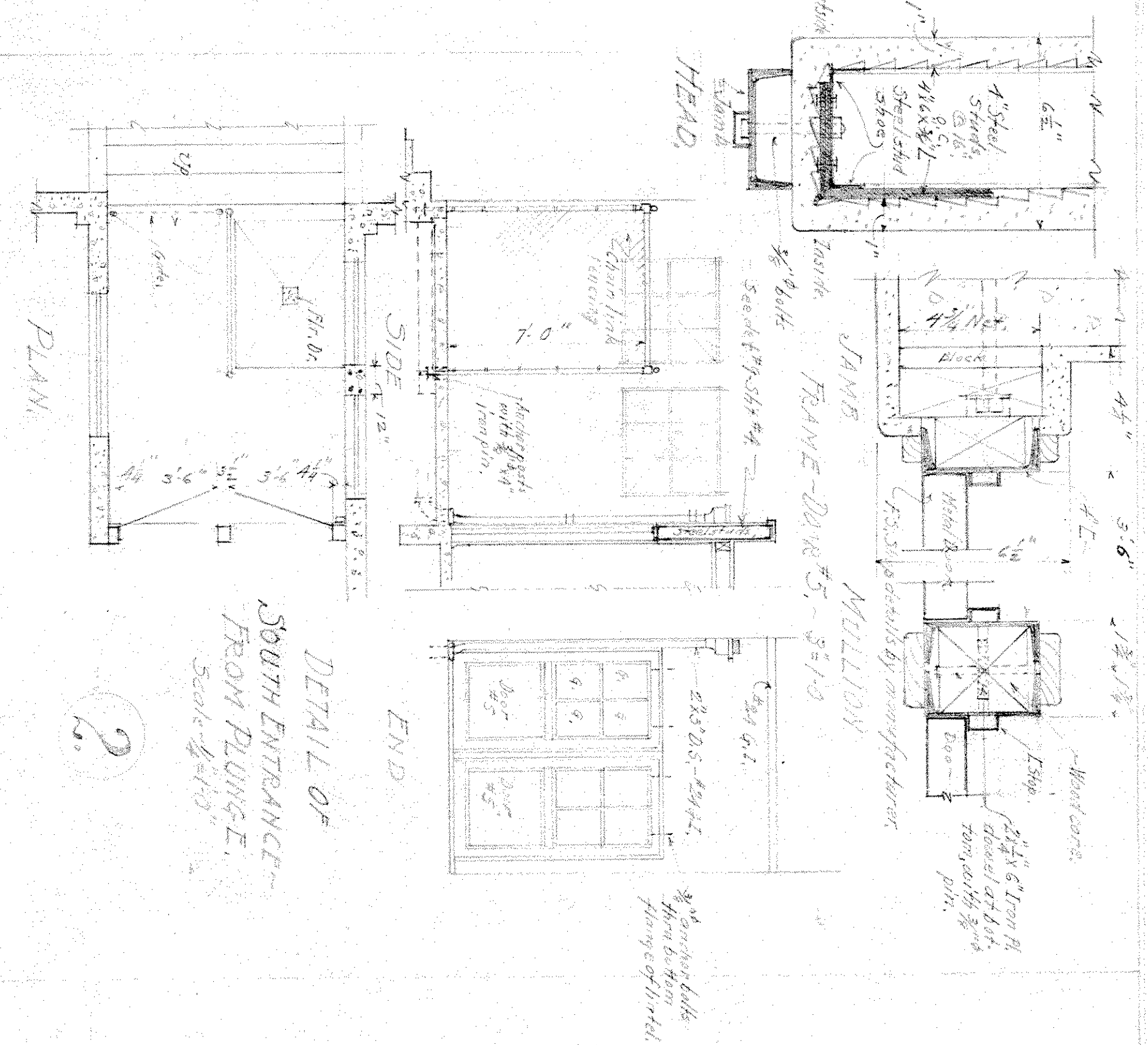


DETAIL OF FRONT WINDOW GROUP
Scale - 3/4" = 1'-0"

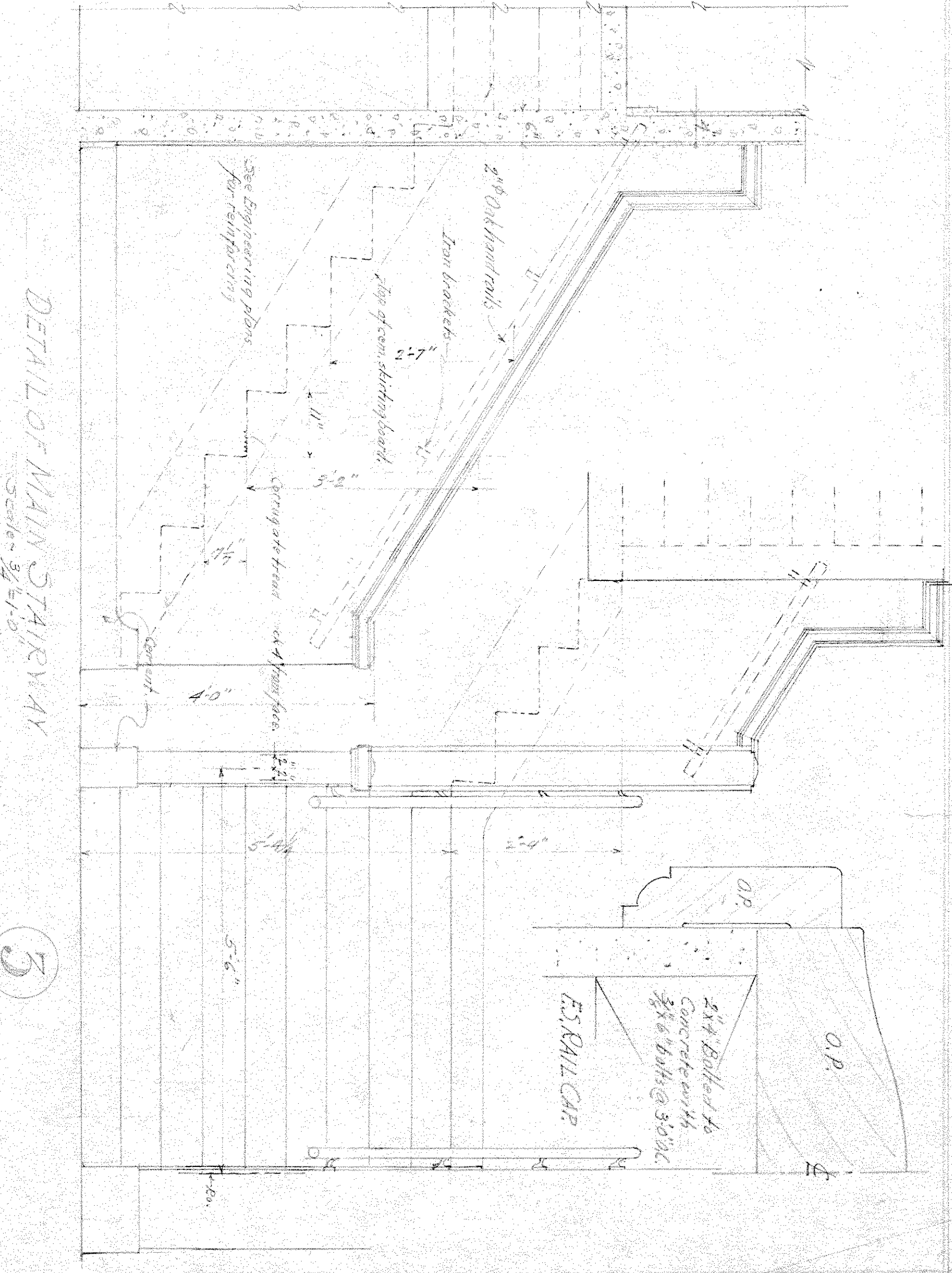


1.



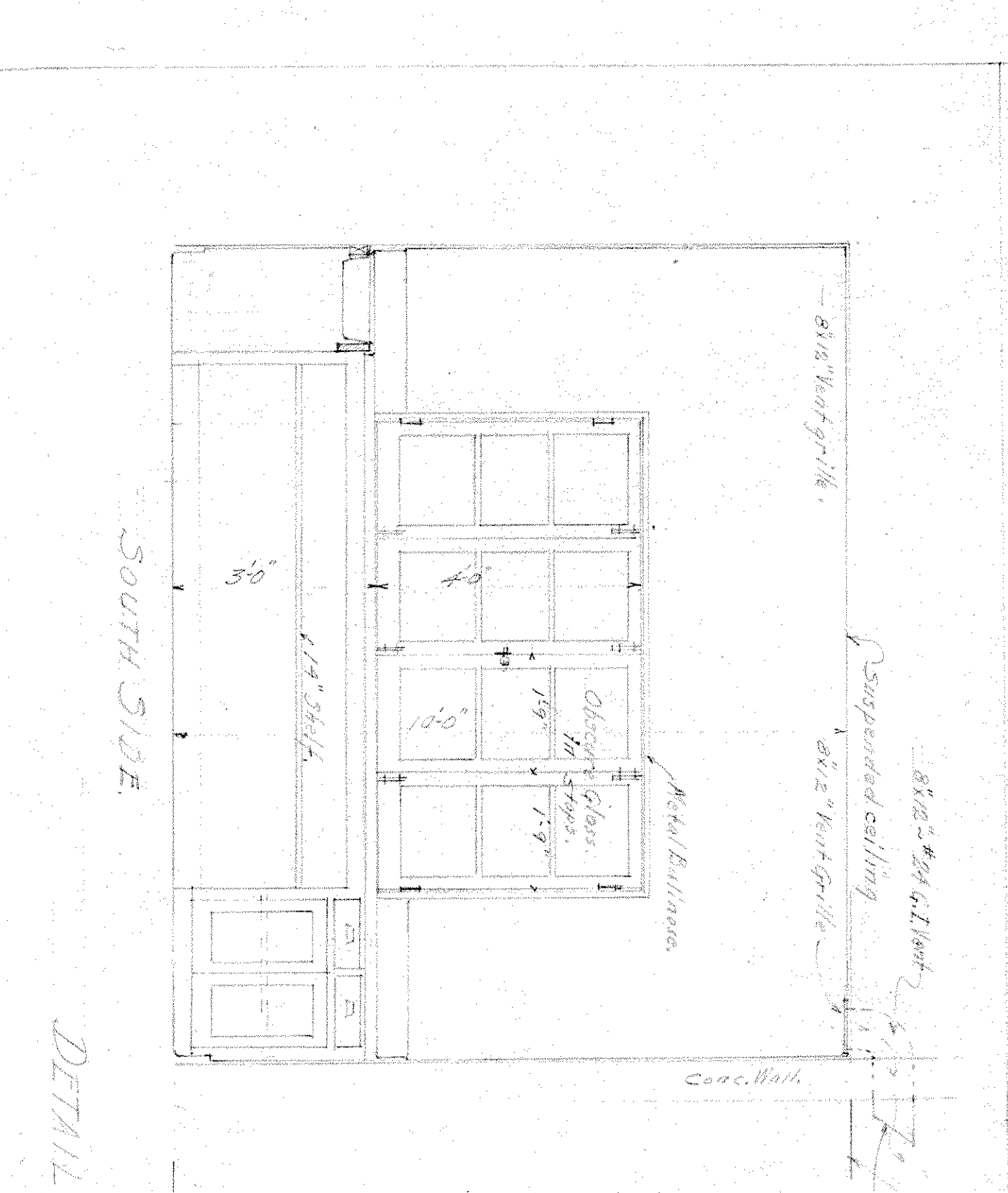
DETAIL OF SOUTH ENTRANCE FROM PLUNGER
Scale - 3/4" = 1'-0"

2.



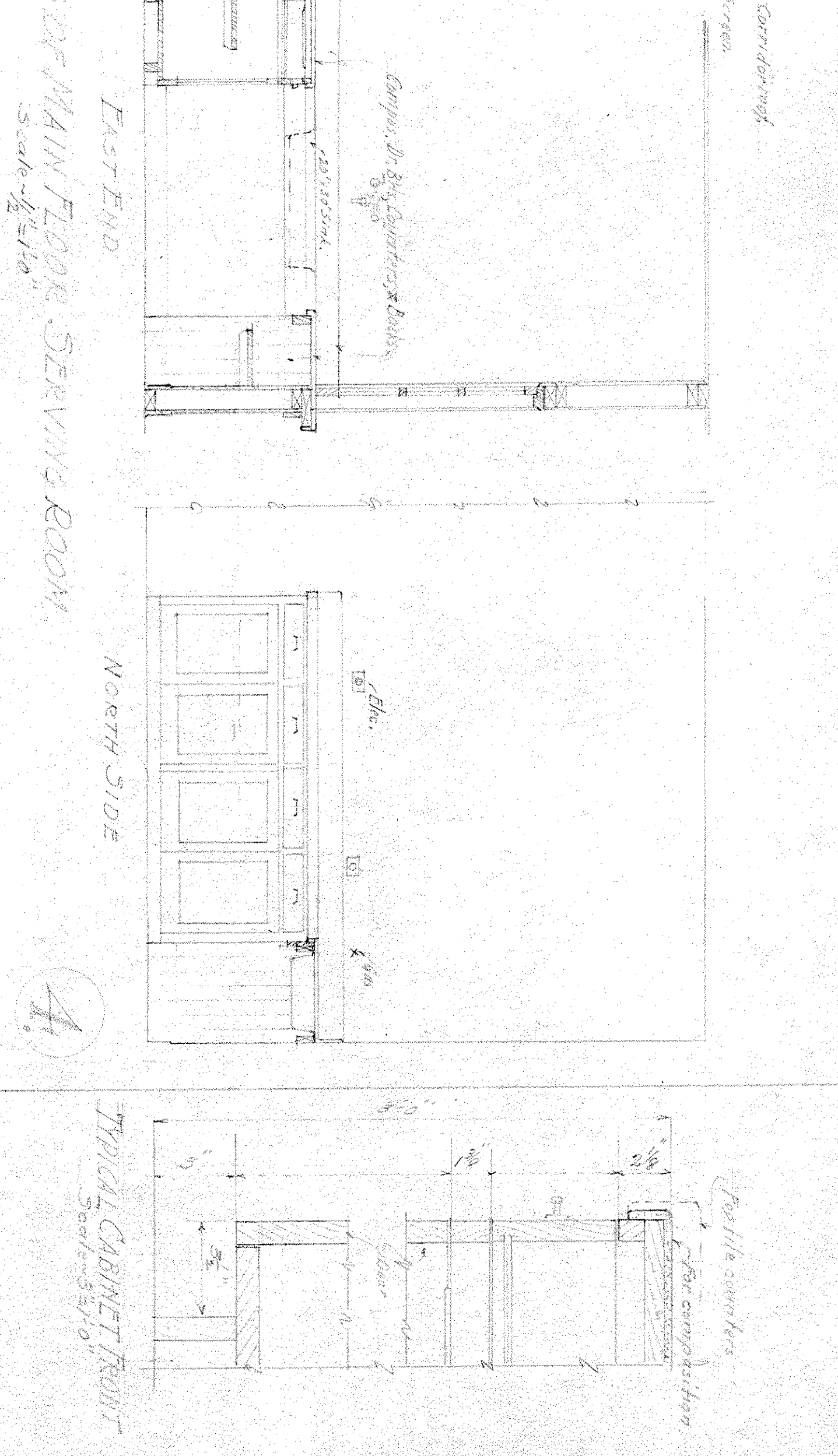
DETAIL OF MAIN STAIRWAY
Scale - 3/4" = 1'-0"

3.

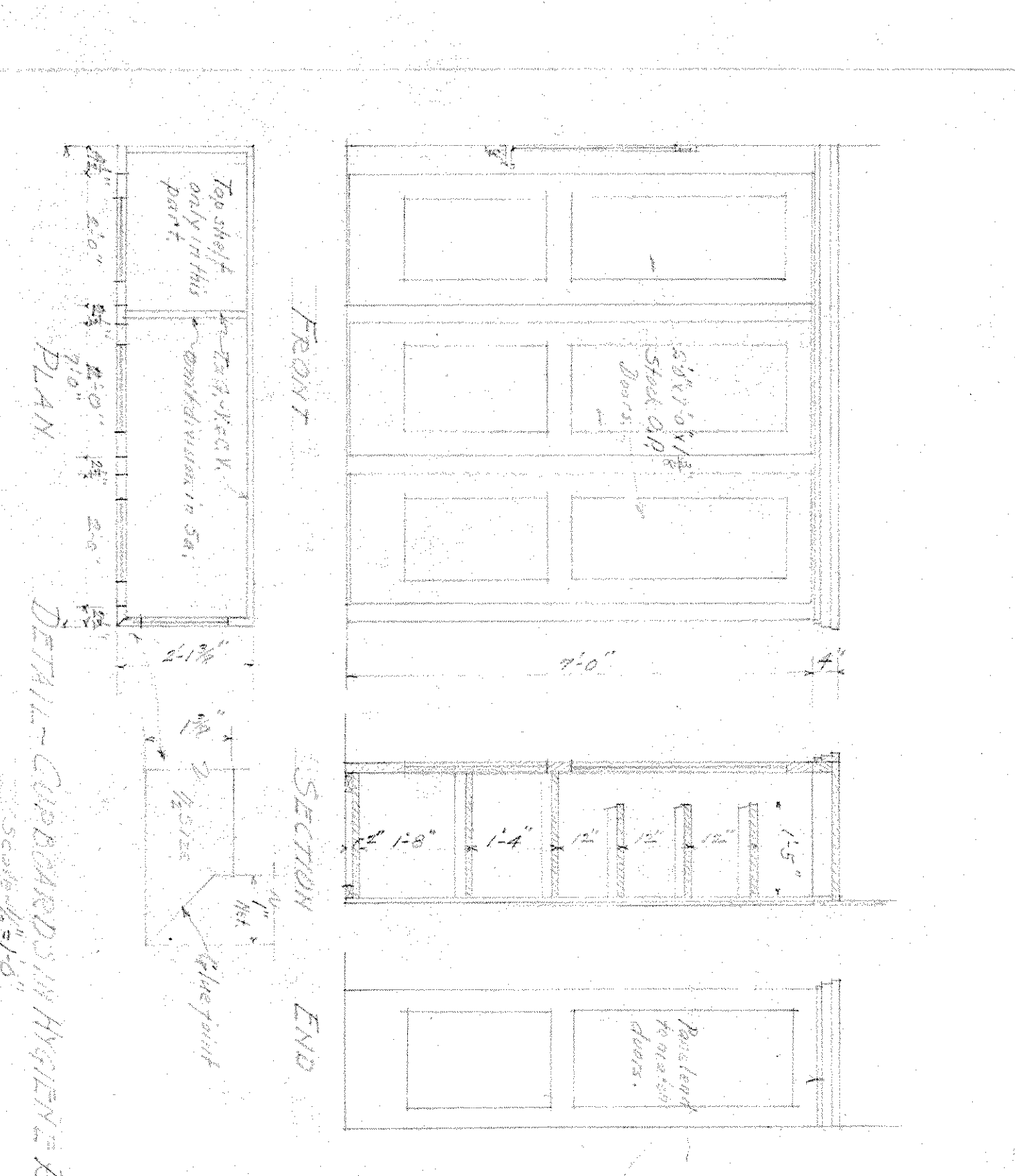


DINING ROOM MAIN FLOOR SERVING ROOM
Scale - 3/4" = 1'-0"

4.

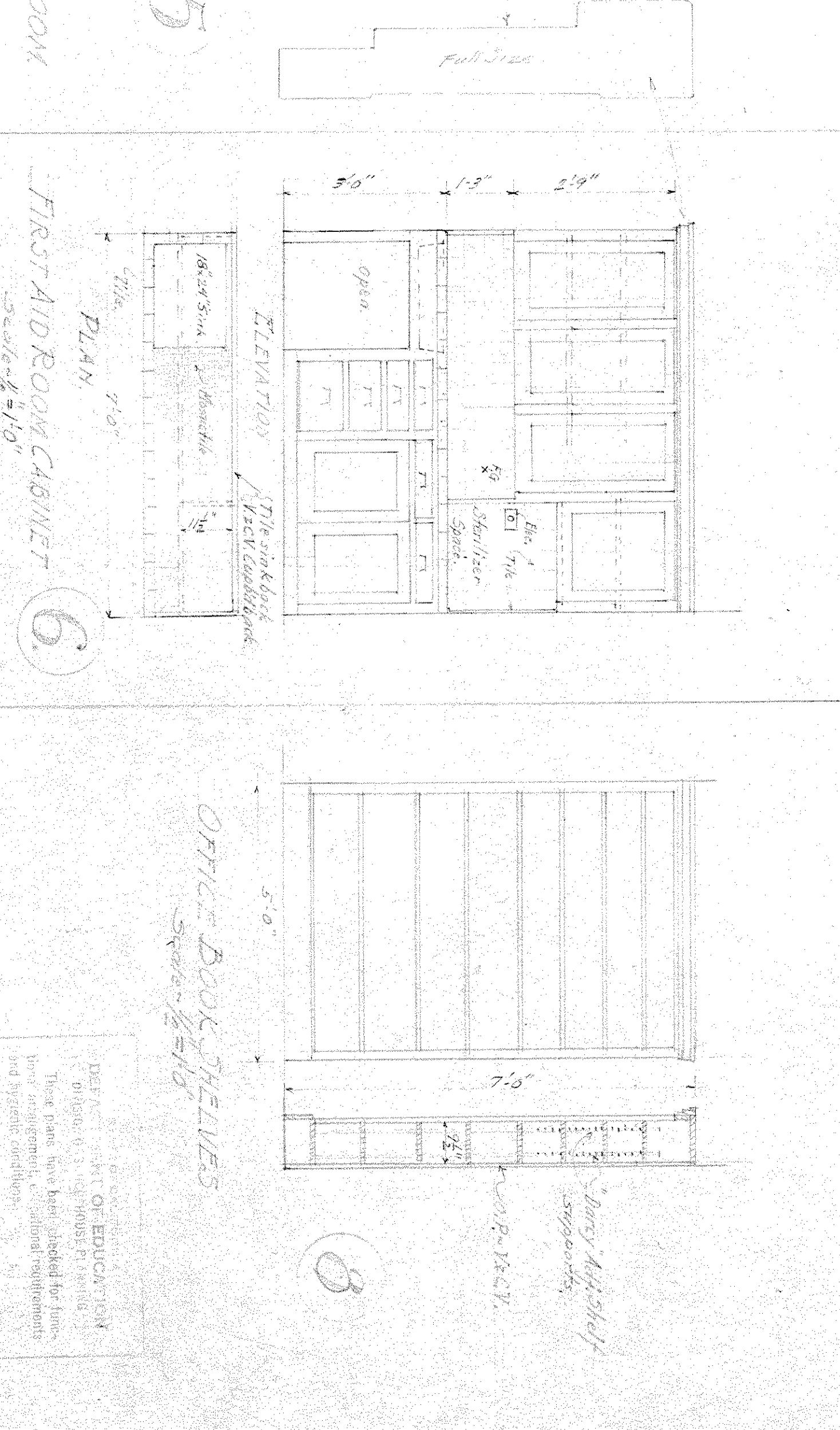


TYPICAL CABINET FRONT
Scale - 3/4" = 1'-0"



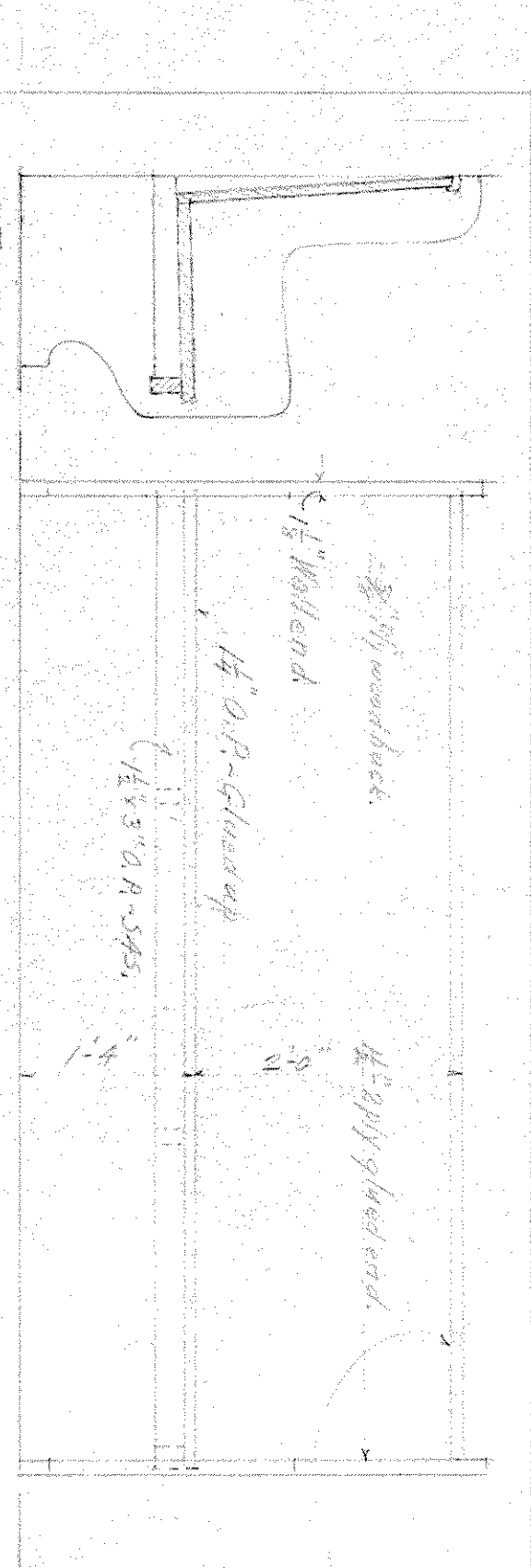
FIRST AID ROOM CABINET
Scale - 3/4" = 1'-0"

6.



OFFICE BOOK SHELVES
Scale - 3/4" = 1'-0"

8.



OFFICE SEAT
Scale - 3/4" = 1'-0"

7.

MISC. DETAILS
 GIRLS' GYMNASIUM
 CHAFFIN JUNIOR COLLEGE
 ONTARIO COLLEGE
 HENRY L. PIERCE ARCHITECTS, INC. 711
 1443 MT. PLEASANT ST., LOS ANGELES 44, CALIF. 522
 GEORGE W. FOSDYKE, ARCHITECT
 112 N. MAIN ST., LOS ANGELES 44, CALIF. 522

5.